

SRI SAI'S

# LAKE VIEW ICON

*Where luxury meets tranquility*



3BHK LUXURY APARTMENTS @ SAINIKIPURI

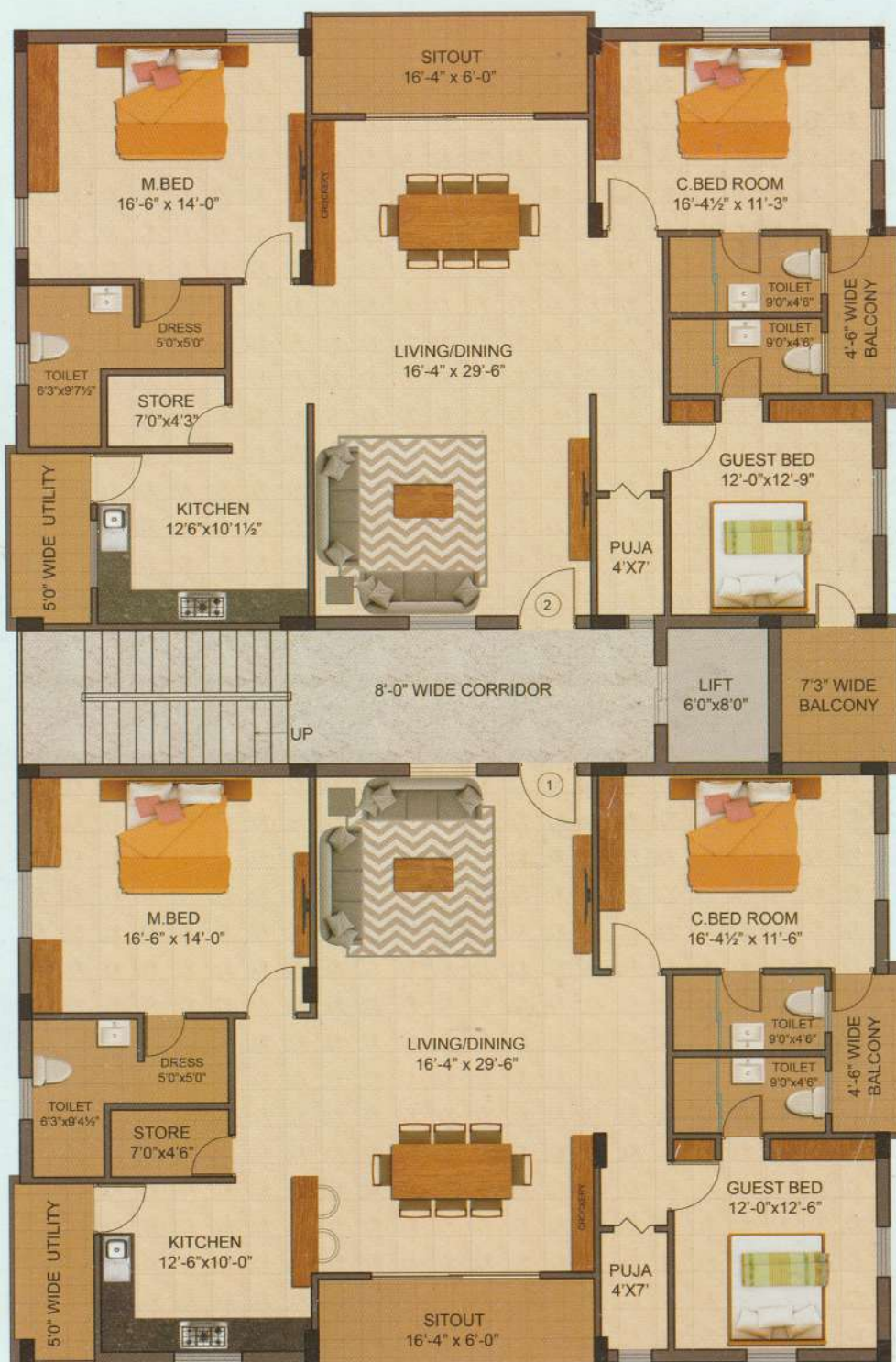




**SRI SAI'S LAKE VIEW ICON** Comprising 10 Luxurious flats having each floor Two units units of 2335sft & 2410sft. It is the one of the most affordable luxury project in a close vicinity of Sainikpuri. It has excellent view of Sanikpuri lake. All the flats are designed within your budget and 100% Vaastu compliant along with the best quality. Finishing products (Grade – A construction materials). Visit the site to see one of the most affordable luxury project before booking elsewhere. You might be visiting your own address!!!







## Features

- Power backup generator
- Limited flats
- Quality construction
- Rainwater harve sting pits
- Strategic location
- 100% Vasstu
- Excellent ventilation
- Individual flats
- Intercom facility
- Video door phone
- 24hrs securtiy

## TYPICAL FLOOR PLAN

### TYPICAL FLOOR AREA STATEMENT

Flat no - 1 2335.0sft

Flat no - 2 2410.0sft



N